

sanako UK

An Introduction and Welcome

David Binns

Director of UK Operations

Sanako UK Ltd



I started working at Sanako UK in 1979 as a technician

I now have over 40 years experience interacting with UK universities & schools understanding the needs of teachers and lecturers

Sanako UK headquarters is in the city of Leeds in the North of England providing easy access to the whole of the UK



www.sanako.co.uk

sanako UK www.sanako.co.uk

Study 1200 Interactive Language Centre

A Languages Technology Success Story



University of Birmingham



University of Durham



University of Liverpool



Monmouth CS - Wales



Epsom School - England



Lasswade HS - Scotland

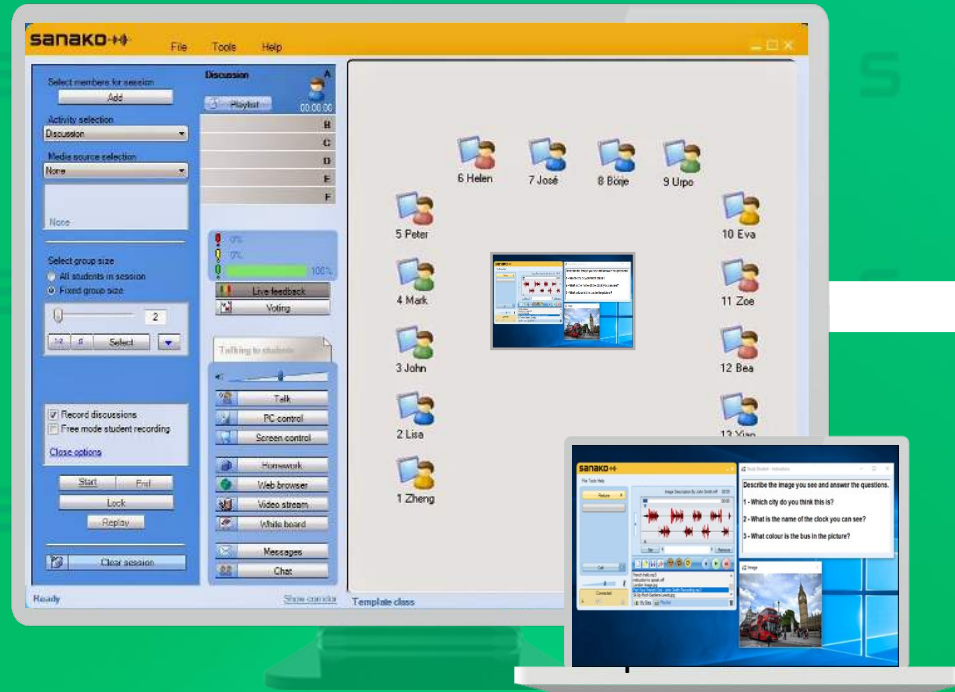
**70% of UK
Universities &
many schools now
use Sanako Systems**

**Using advanced
blended learning
languages products
such as**

**Sanako Connect,
Sanako Study,
Sanako Interpreting,
Sanako Pronounce,
Sanako MFL Headsets**

sanako UK www.sanako.co.uk

Study 1200 Interactive Language Centre



Sanako Study 1200
Typical UK Blended Learning
Installation

Self Study Classroom



UK Customers wanted to reinforce classroom lessons remotely

So the Sanako Study 1200 software is linked to the institution file server for ease of access



Institution File Server

This allows for independent learning around the institution with Sanako Study Lite

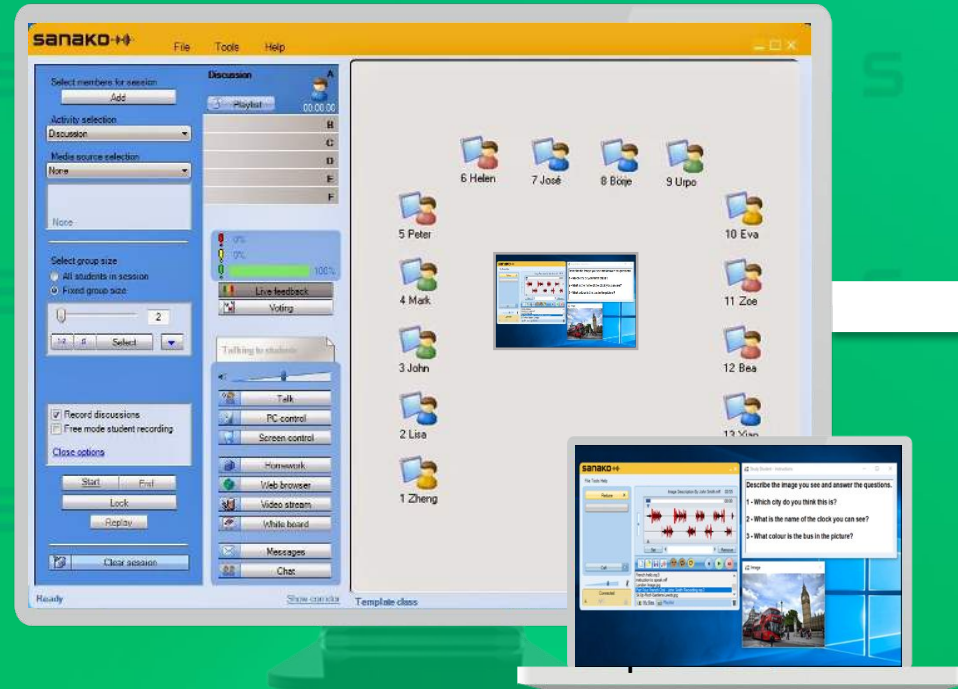


Sanako Connect Online

And online with Sanako Connect

sanako UK www.sanako.co.uk

Study 1200 Interactive Language Centre



Sanako Study 1200
Typical UK Blended Learning Installation
With Interpreting Modules

Self Study Classroom



Hardware
Interpreting
Suite

Add Interpreting Modules



University
File Server

Software
Interpreting
Suite



Sanako Connect Online



In March 2020 the
UK was hit by
COVID-19 virus and
the United Kingdom
went into lockdown

However, the
education of our
students must
continue, so how
was this done?

COVID-19



Many institutions
turned to generic
platforms such as
Zoom & MS Teams as
a solution



But it was soon
discovered that these
were too generic for
languages teaching
and added Sanako
Connect for dedicated
blended learning

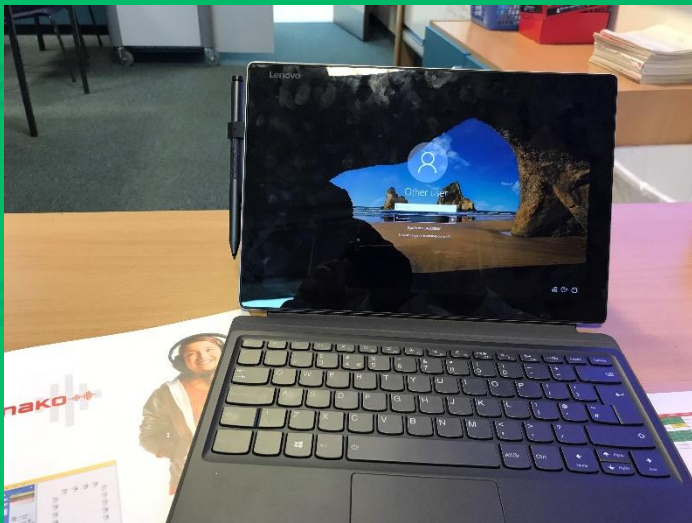
sanako
Connect

Let's take a look at a few examples

sanako UK www.sanako.co.uk

Learning Languages @ Rugby School

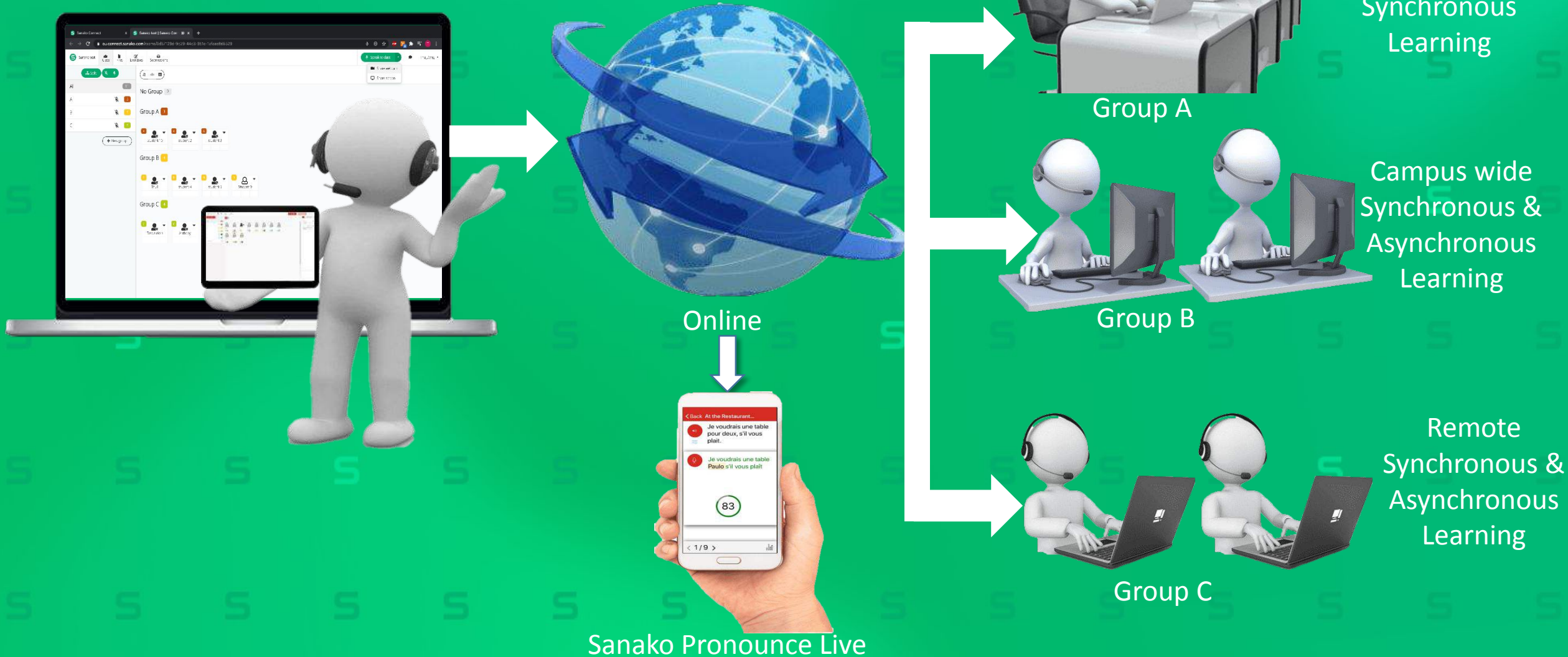
Added Sanako Connect Online Language Centre



- ❑ Founded in 1567
- ❑ Ranked in top 5 UK schools every year
- ❑ Has around 1000 students
- ❑ Famous for inventing the game of Rugby
- ❑ Alumni includes 7 British Prime Ministers
- ❑ Uses Sanako Blended Learning Technology
- ❑ Sanako Study 1200 Language Centres
- ❑ Sanako Connect Online
- ❑ Sanako Pronounce Live Online
- ❑ Sanako Professional Languages Headsets



Sanako Connect Interactive Language Centre Synchronous & Asynchronous Learning



sanako UK www.sanako.co.uk
Study 1200 Interactive Language Centre

Blended Learning Languages @ Monmouth Comprehensive School

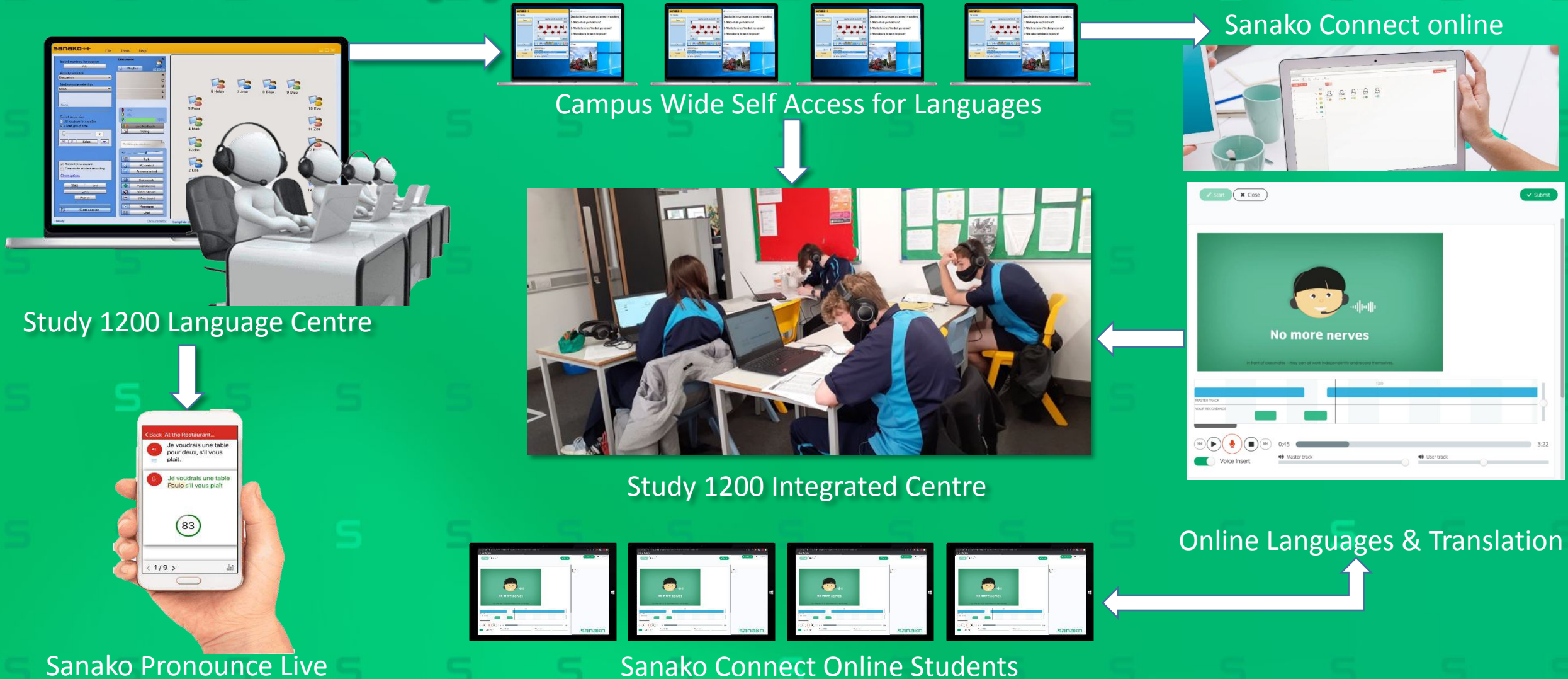


- ❑ Founded in 1903
- ❑ State funded school in Wales
- ❑ Has around 1600 students
- ❑ Uses Sanako Blended Learning Technology
- ❑ Sanako Study 1200 Language Centre
- ❑ Sanako Connect Online
- ❑ Sanako Pronounce Live Online
- ❑ Sanako Professional Languages Headsets



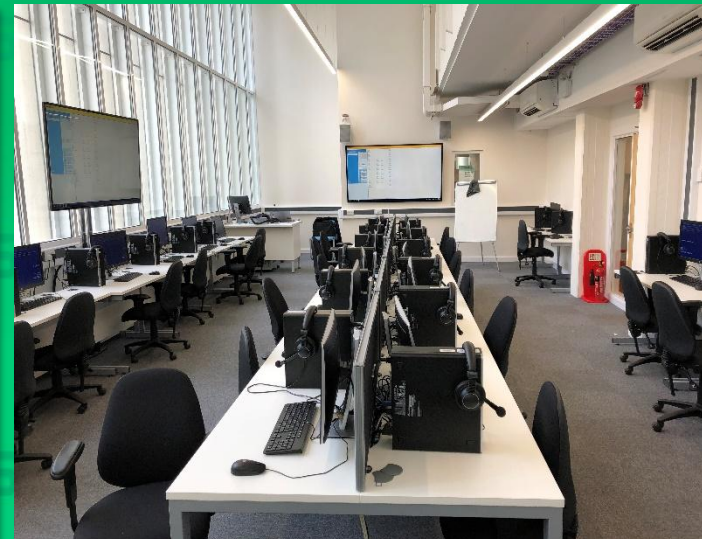
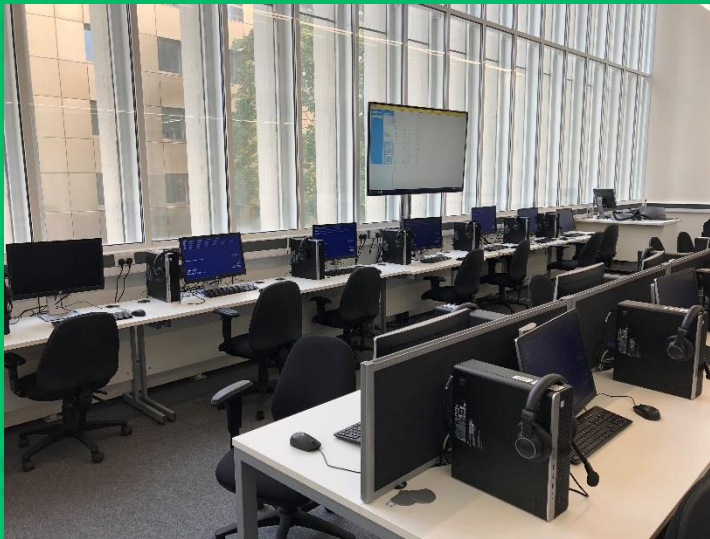
sanako UK www.sanako.co.uk
Study 1200 Interactive Language Centre
Sanako Connect online Languages centre

Monmouth Comprehensive School Student Transition Model



sanako UK www.sanako.co.uk

Study 1200 Interactive Language Centre
Sanako Connect online Languages centre



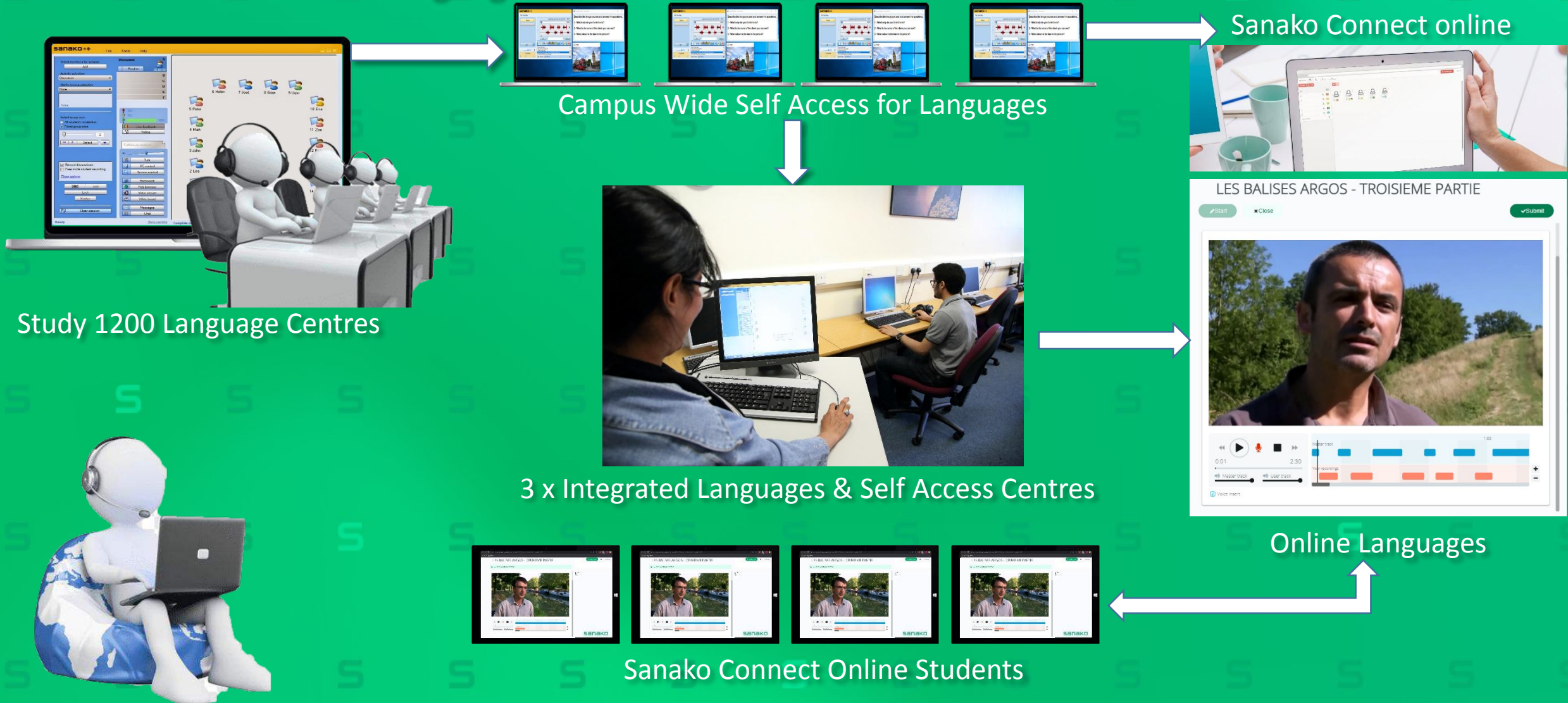
Blended Language Learning @ University of Liverpool

- ❑ Founded in 1881
- ❑ Ranked at 30 in League tables
- ❑ Has around 25,000 students
- ❑ Alumni includes
 - ❑ Dr Ong Teng Cheong, Ex President of Singapore
 - ❑ Stella Rimington Ex Head of MI5
- ❑ Uses Sanako Blended Learning Technology
- ❑ Sanako Study 1200 Language Centres
- ❑ Sanako Connect Online
- ❑ Sanako Pronounce Live Online
- ❑ Sanako Professional Languages Headsets



sanako UK www.sanako.co.uk
Study 1200 Interactive Language Centre
Sanako Connect online Languages centre

University of Liverpool Student Transition Model



sanako UK www.sanako.co.uk

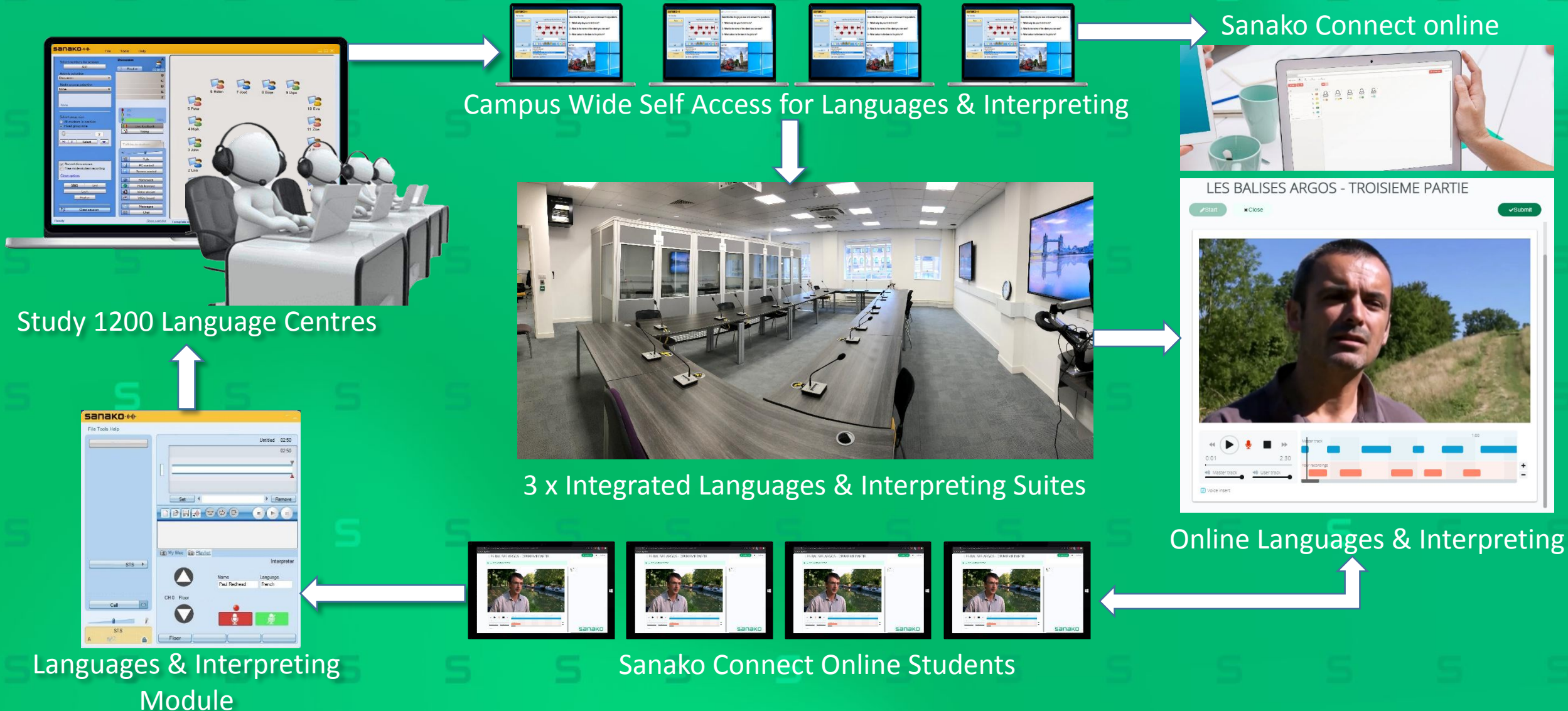
Study 1200 Interactive Language Centre



Languages & Interpreting @ University of Westminster

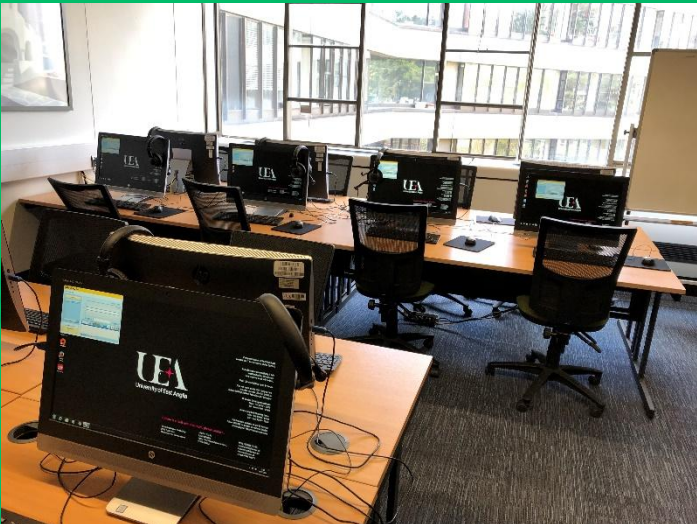
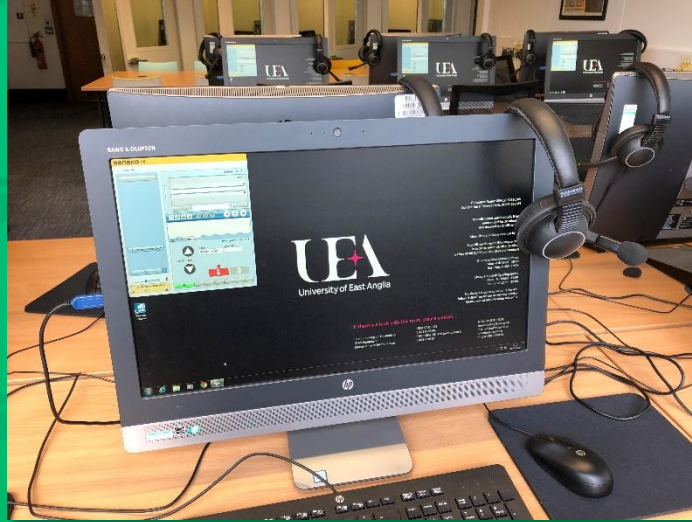
- ❑ Founded in 1838
- ❑ Ranked at 20 in League tables
- ❑ Has around 21,000 students
- ❑ Alumni includes
 - ❑ Alexander Fleming Discoverer of Penicillin
 - ❑ Mick Jagger from the Rolling Stones
- ❑ Sanako Blended Learning Technology
- ❑ Sanako Study 1200 Interpreting Centres
- ❑ Sanako Connect Online
- ❑ Sanako Pronounce Live Online
- ❑ Sanako Professional Languages Headsets





sanako UK www.sanako.co.uk

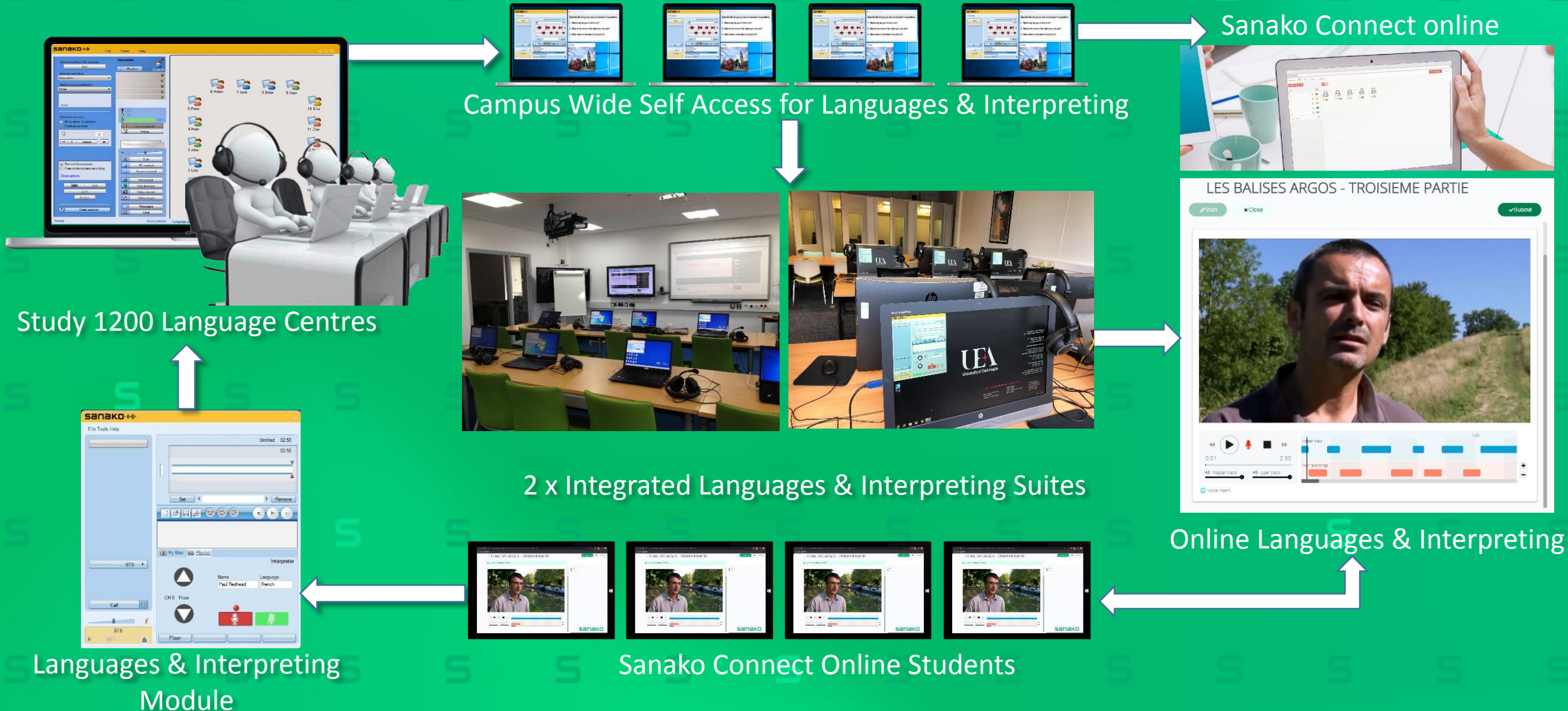
Study 1200 Interactive Language Centre



Languages & Interpreting @ University of East Anglia

- ❑ Founded in 1963
- ❑ Has around 30,000 students
- ❑ Alumni includes
 - ❑ Baroness Rosalind Scott, Politician
 - ❑ Lieutenant General Sir Robert Henry Gervase Fulton
- ❑ Sanako Blended Learning Technology
- ❑ Sanako Study 1200 Interpreting
- ❑ Sanako Connect Online
- ❑ Sanako Pronounce Live Online
- ❑ Sanako Professional Languages Headsets





sanako UK www.sanako.co.uk
Study 1200 Interactive Language Centre

Since the 2020 COVID Pandemic the Sanako
Software Only Solutions Have Become a Standard



Study 1200 Language Centres



User Training @ Sanako UK Offices

How do they work?

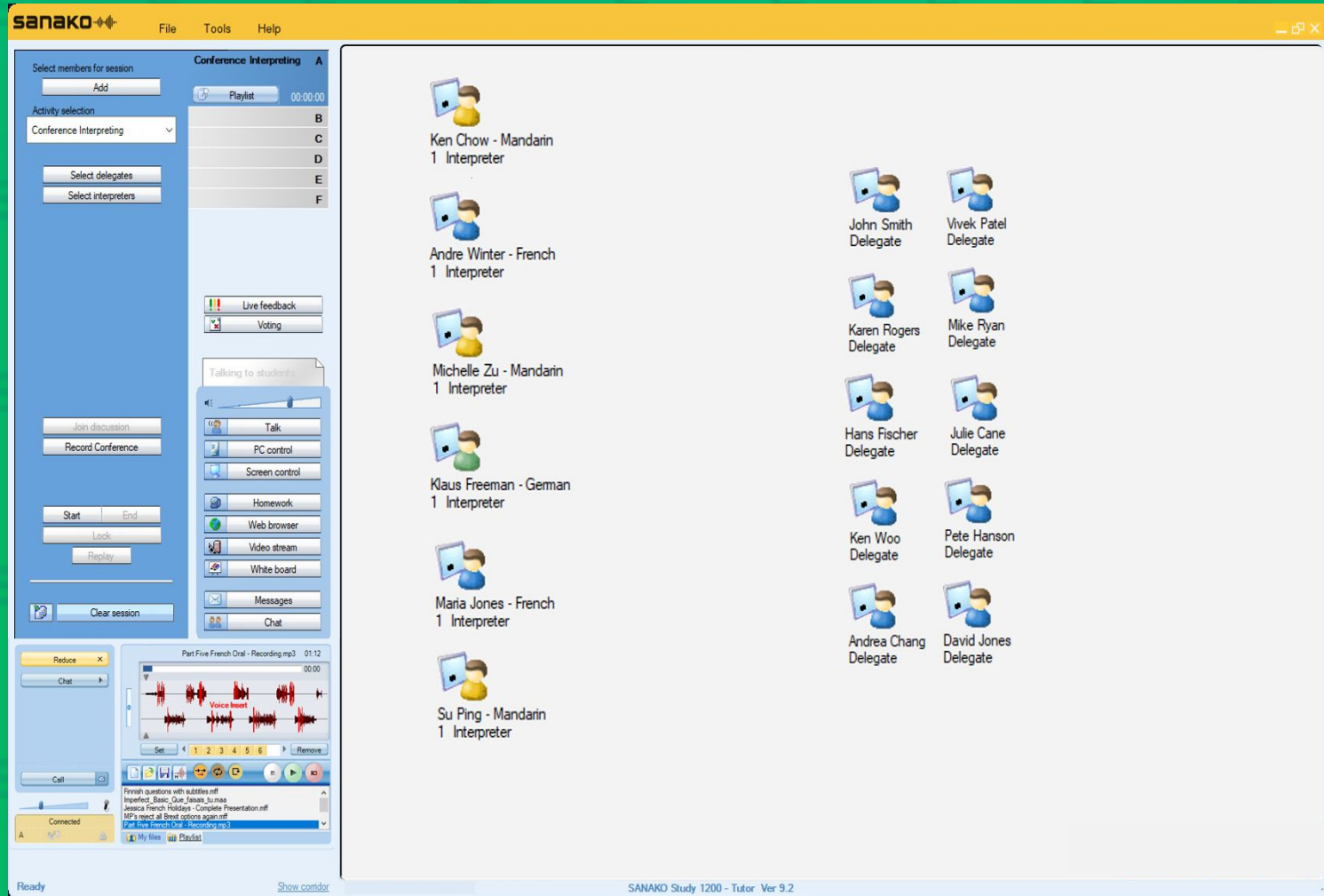


Languages & Interpreting

sanako UK www.sanako.co.uk

Study 1200 Interactive Language Centre

Languages & Interpreting Software Module



Tutor Interface



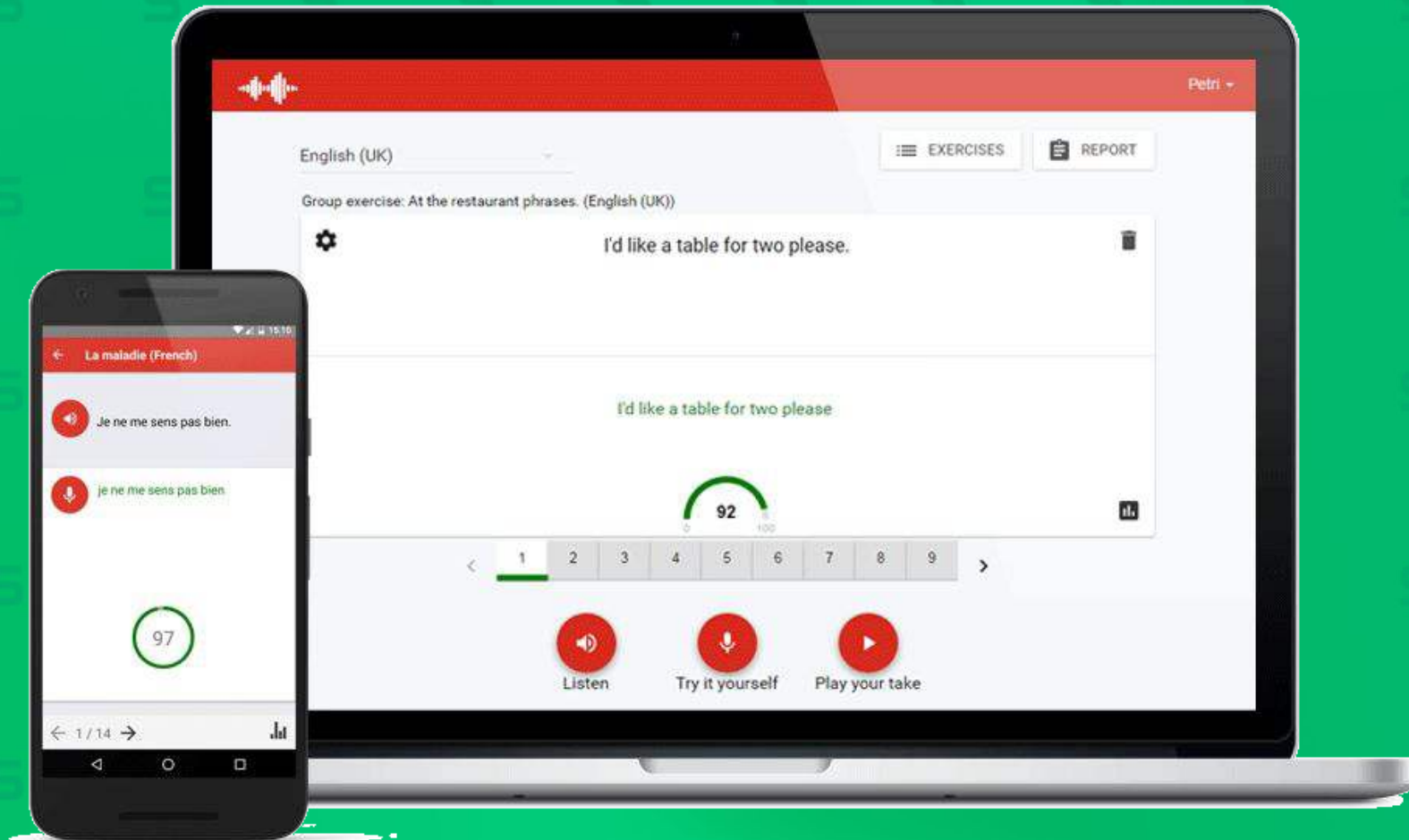
Student Interface – interpreting version

The screenshot displays the Sanako Connect Tutor Interface. At the top, there is a navigation bar with tabs for 'Sanako test', 'Class', 'Files', 'Exercises', and 'Submissions'. A 'Speak to class' button is visible on the right. Below the navigation bar, a sidebar on the left contains a 'Split' button, a microphone icon, and a list of students: 'All' (11), 'A' (3), 'B' (4), and 'C' (4). A '+ New group' button is at the bottom of the sidebar. The main area shows three groups: 'No Group' (0), 'Group A' (3), and 'Group B' (4). Each group has a list of student avatars and names. Group A includes 'Student 10', 'student 2', and 'student 3'. Group B includes 'Thu1', 'student 4', 'student 5', and 'Student 9'. Group C includes 'Test Aleksis', 'Anthony', 'student 6', and 'Student 1'. A 'Share webcam' and 'Share screen' menu is open on the right side of the interface.

Tutor Interface

The screenshot displays the Sanako Connect Student Interface. At the top, there is a title bar with 'LES BALISES ARGOS - TROISIEME PARTIE'. Below the title bar, there is a 'Start' button, a 'Close' button, and a 'Submit' button. The main area shows a video player with a man speaking. Below the video player, there is a timeline with a play button, a progress bar, and a volume control. The timeline shows a 'Master track' and a 'User track'.

Student Interface
Languages & Interpreting version



Tutor Interface



Student Interface

Any Questions?

Thank you

David.binns@Sanako.com